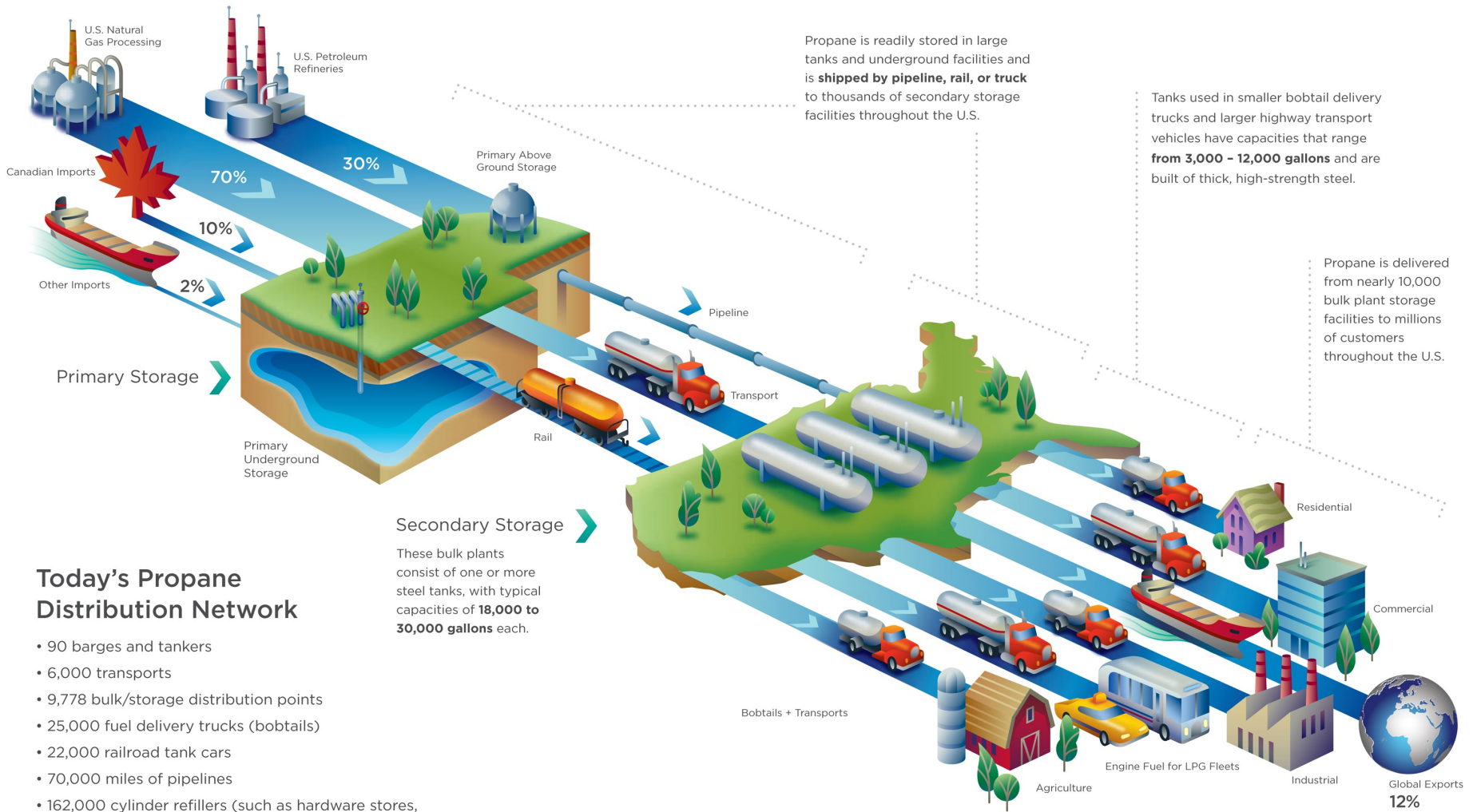
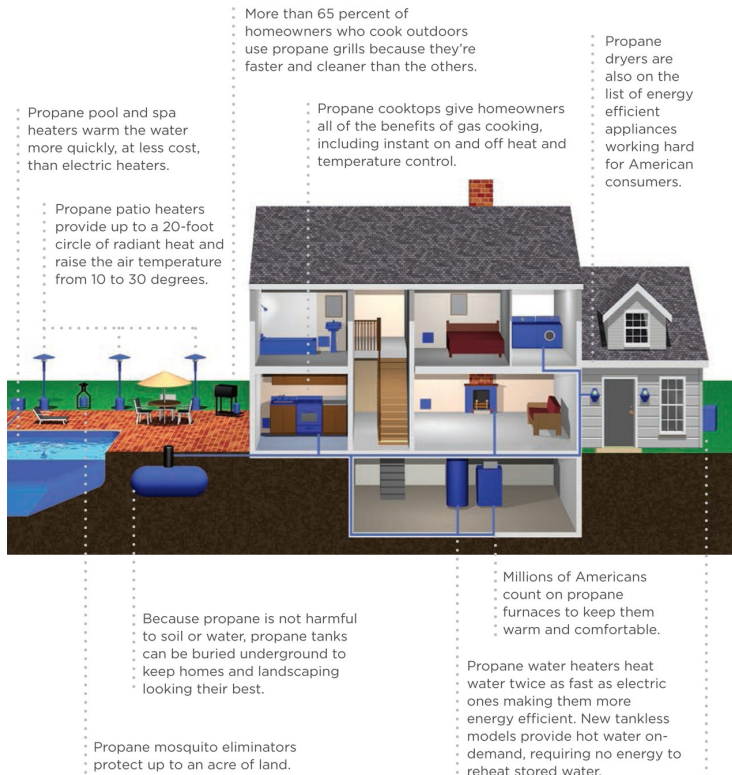


## DID YOU KNOW...

Propane is 270 times more compact as a liquid than as a gas, making it highly economical to store and transport.





## Use in Emergency Response Situations:

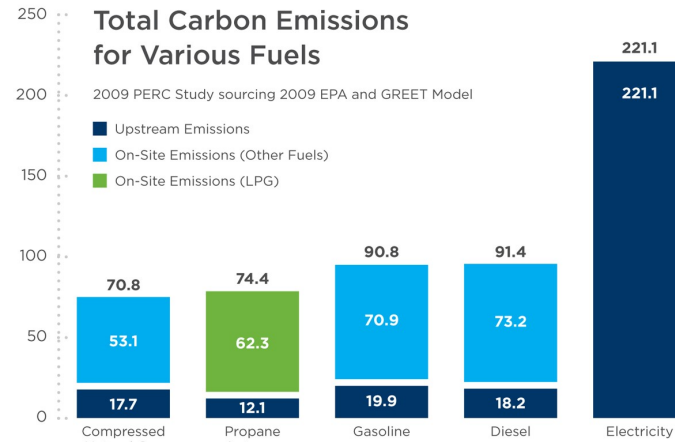
Propane serves as a critical component in emergency relief efforts due to its portability, and, in many cases, is the only reliable fuel able to meet the variety of energy needs from a disaster. The Federal Emergency Management Agency (FEMA) and the Red Cross have relied on propane, among other fuels, in disaster response, specifically when the supply of other fuels has been interrupted. Propane is a preferred energy resource at relief stations and temporary shelters for displaced citizens, providing fuel for cooking, hot water, space heat, and generators.

## Autogas: The Environmentally Friendly Transportation Fuel

Propane autogas saves money and helps protect the environment. It offers the best combination of durability, performance, and driving range of commercially available alternative fuels. Propane is an ideal fuel for a variety of fleets, including: school buses, police cars, and delivery vans.

- Propane is one of the lowest total carbon emissions fuels. In light-duty trucks, propane cuts greenhouse gas emissions by 19 percent compared with gasoline.
- Compared with gasoline, propane can cut emissions of toxins and carcinogens such as benzene and toluene by up to 96 percent.
- While nearly 17 million gallons of gasoline are spilled each year when refueling gasoline tanks, propane does not form a liquid puddle. Any propane that leaks would be in the form of vapor and quickly dissipates into the air. Moreover, propane quickly breaks down in the atmosphere, so it has no direct global warming potential.

kg CO2 Equivalent Per Million Btu



## DID YOU KNOW...

- Propane autogas is the world's third most common engine fuel.
- There are nearly 150,000 buses, taxi cabs, delivery vehicles, and other vehicles across the U.S. using clean-burning propane autogas.

